

Quality Control - Concrete

Data Management and Reports for Concrete, Mortar, Grout and Block

Reporting Capabilities

- ▷ Meets or exceeds reporting requirements for:
 - ASTM C 39 cylinders
 - ASTM C 42 cored and sawed specimens
 - ASTM C 78 and C 293 beams
 - ASTM C 109 mortar cubes
 - ASTM C 1019 grout prisms
 - ASTM C 780 mortar cylinders
 - ASTM C 1314 masonry block prisms
 - ASTM C 942 grout cubes
 - ASTM C 140 masonry units
 - ASTMD4832 Soil Cement
- ▷ Each test type has its own data entry screen and report format
- ▷ Reports automatically print additional pages when capacity is exceeded
- ▷ Performs screen previews of reports
- ▷ Print copies of reports for each name on the distribution list, with addresses for use with window envelopes
- ▷ Can print mailing labels
- ▷ Use the supplied report formats, or have custom reports designed
- ▷ US input - metric output option
- ▷ Generate reports listing specimens scheduled for breaking testing for a given date
- ▷ QC-Concrete can create PDF format files without the addition of Adobe Acrobat.
- ▷ Color logos and color text can be incorporated into custom report templates.
- ▷ You may choose to print all new reports which have not yet been printed.

User Interface

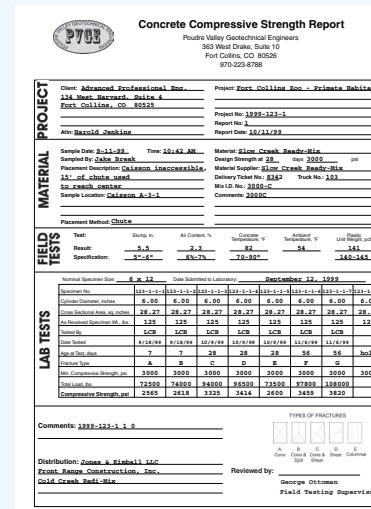
- ▷ The program can calculate area, strength, percent of required strength, and other specimen parameters
- ▷ New user features (like pop up warnings) can be turned off after becoming an expert
- ▷ Many keyboard shortcuts like picking from predefined lists and on click dates
- ▷ Choose automatic incrementing of report and specimen numbers
- ▷ Failing tests may be shown in red and the break table can be set up to display alternating rows in different colors
- ▷ Customize input screen arrangement
- ▷ Individual users can set their own preferences such as colors, fonts, and screen layout, without affecting all users

Data Management Features

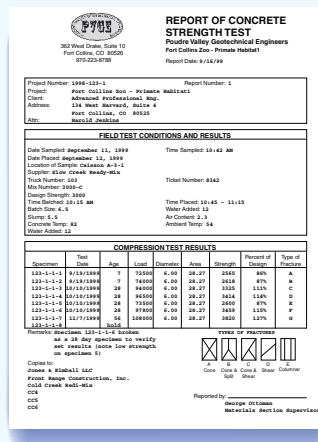
- ▷ Calculate average strengths and determine pass/fail based on 7, 28, 56 or other age at which the strength is required to meet specifications
- ▷ Quickly find any specimen for entry of its break force
- ▷ Keeps record of all mixes for automatic referencing of the mix components or specifications

Connectivity

- ▷ Import client data for new projects: New projects can now automatically retrieve the client data from the QC-Concrete database or, by using an optional module, external databases.
- ▷ Import break data from break machine data file: QC-Concrete can now automatically merge break data from a digital load display data acquisition file. This feature is only available with an optional module but there is no additional cost. Contact GEOSYSTEM for more information.
- ▷ Compatible with GEOSYSTEM QC-Statistics for ACI 214, 301, and 318 statistics and performance reporting software (available in 2006)

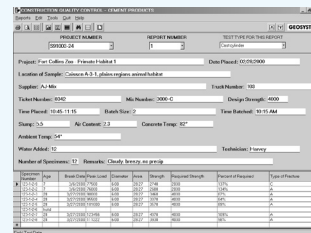


Sample of customized report



One of 3 standard formats included

- ▷ Scroll through data from previous tests while entering field data: The data you just entered for a different report is now at your fingertips when entering new reports.
- ▷ Automatic values for dimensions and fracture type



Simple data entry

Testing Summary Reports

- ▷ Testing Summary Reports for QC-Concrete list all specimens broken based on user specified selection criteria. Several standard report formats are included, and custom reports may be designed.
- ▷ Specify range of test Slump, Air Content, Concrete Temperature, Air Temperature, Unit Weight, Time In Mixer, Water Added, Sampled By, Number of Specimens
- ▷ Specify range of specimen Weight, Strength, Percent of Required, Fracture Type, Tested By, Dim 1, std. dia./wid./side 1, Dim 2, std. depth/side 2, Dim 3, std. span, Area/Exception
- ▷ Restrict to specific ages, list only certain projects, include only specimens for a specific mix, or specify range of sample or placement dates

More information on Quality Control - Concrete and the entire line of **GEOSYSTEM®** Software at our website:

WWW.GEOSYSTEMSOFTWARE.COM